

Top View

East Side

Open Space

Tomato Bed

Walkway

Tomato Bed

Walkway

Plant Bed

Open Space

West Side

North Side

South Side

Furnace Area

**Bottom Frame**

East Side

*Open Space*

*Tomato Bed*

*Walkway*

*Tomato Bed*

*Walkway*

*Plant Bed*

*Open Space*

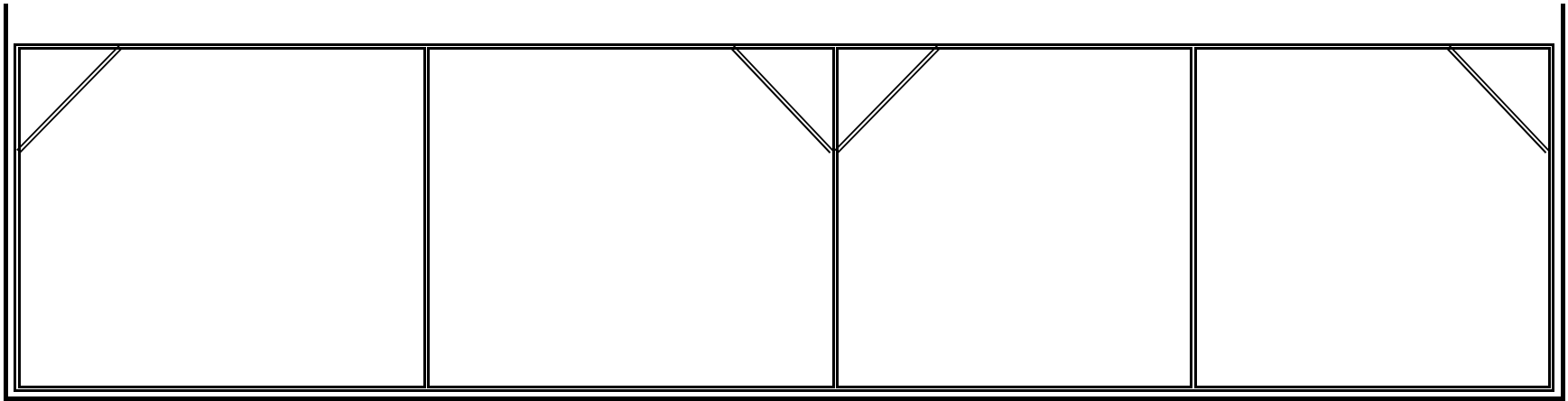
West Side

North Side

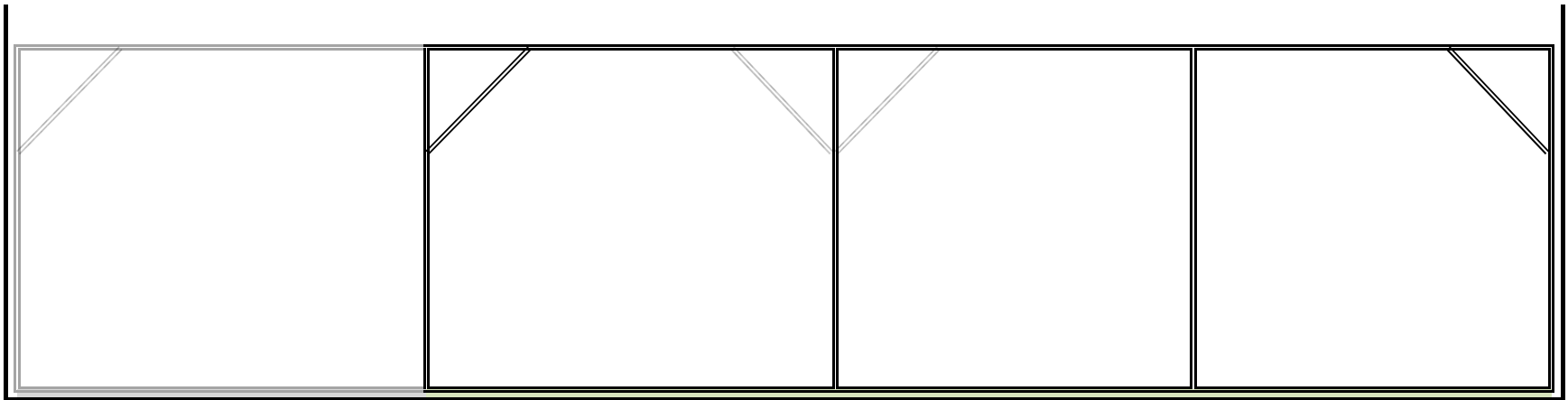
South Side

Furnace Area

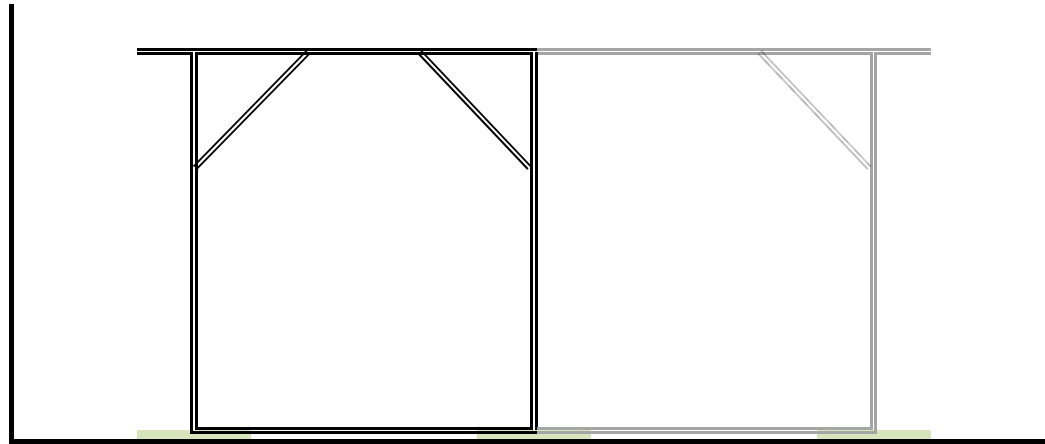
**East Side View**



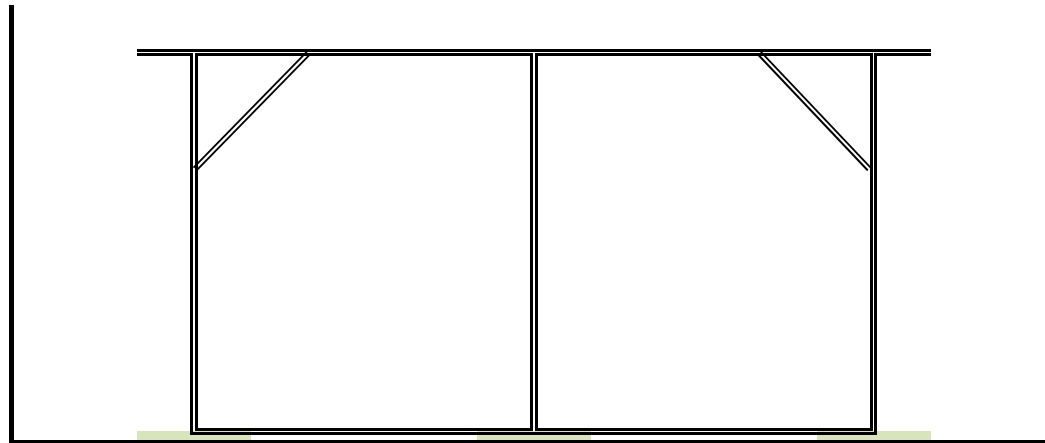
**West Side View**



**North Side View**



**South Side View**



Top View

East Side

Open Space

Tomato Bed

Walkway

Tomato Bed

Walkway

Plant Bed

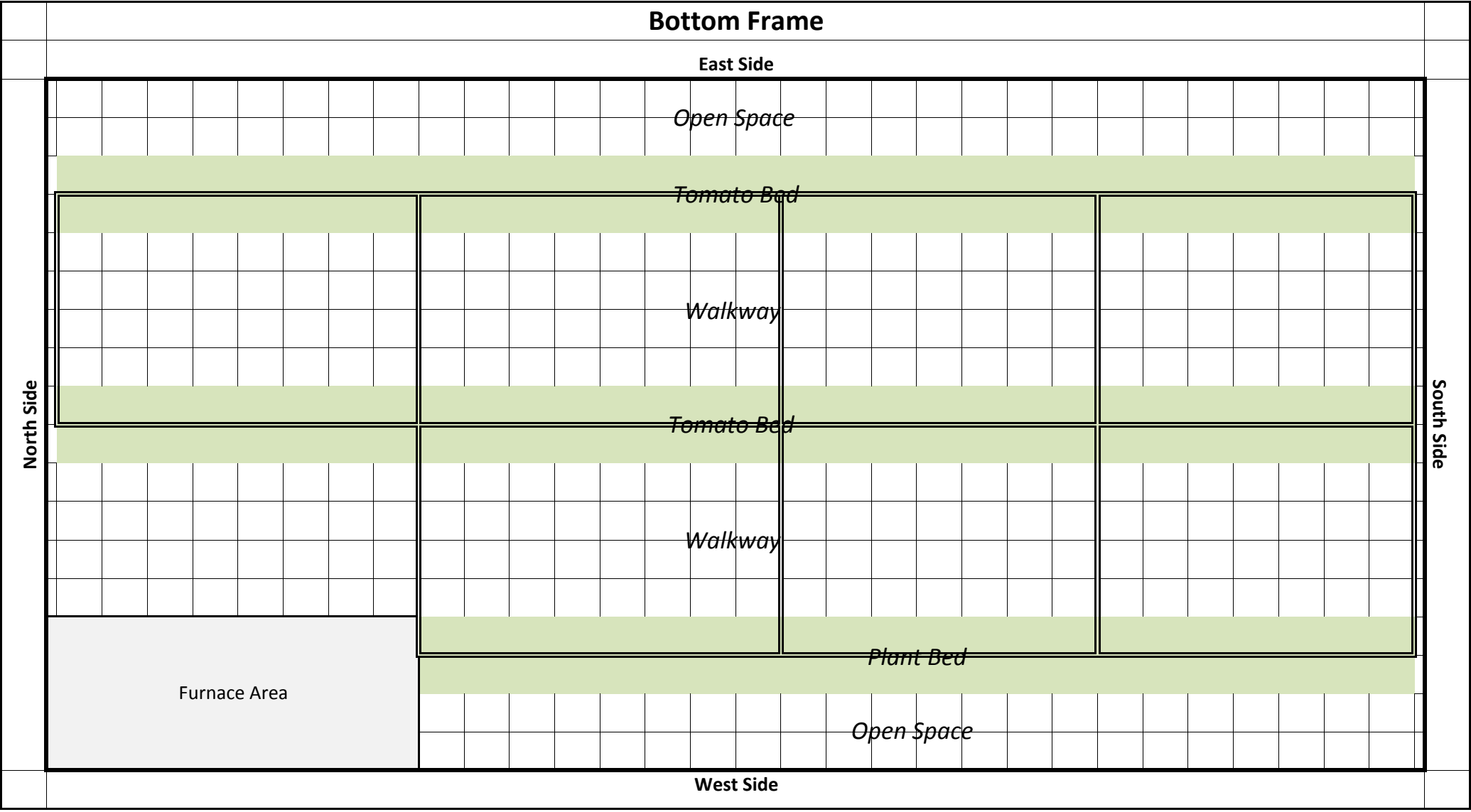
Open Space

West Side

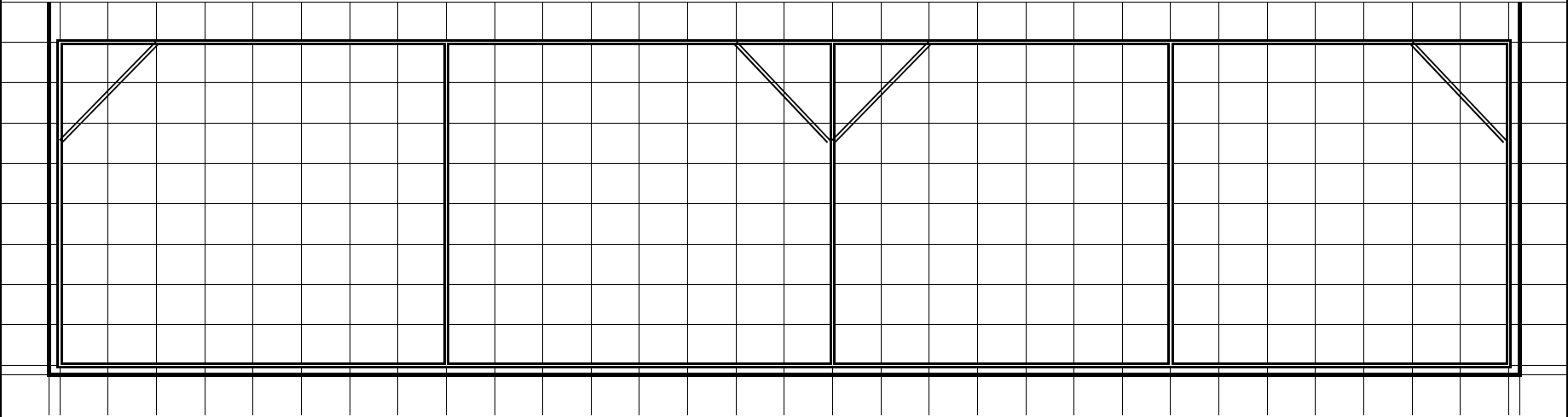
North Side

South Side

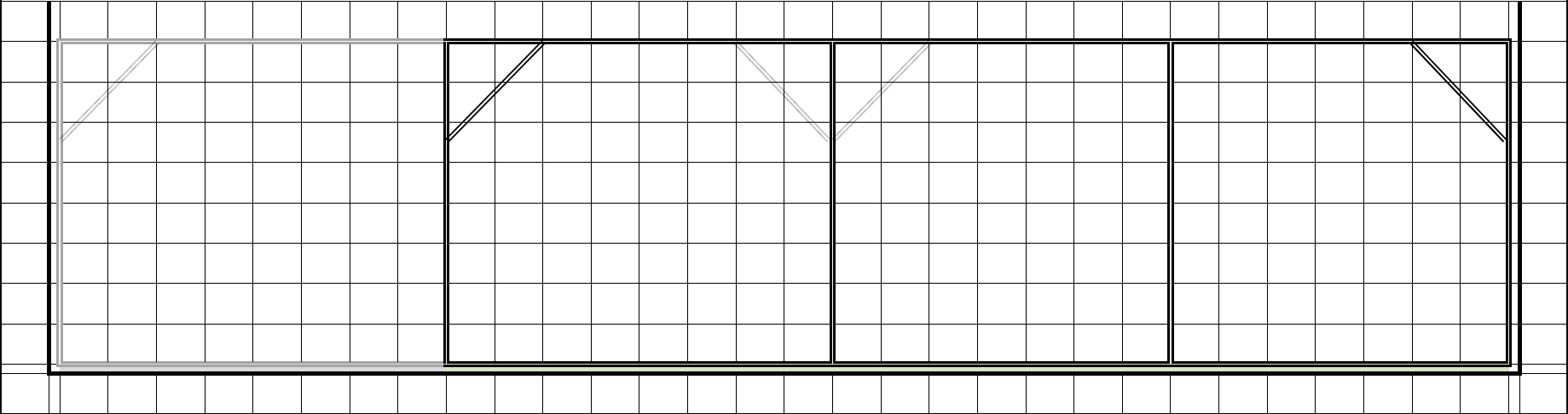
Furnace Area



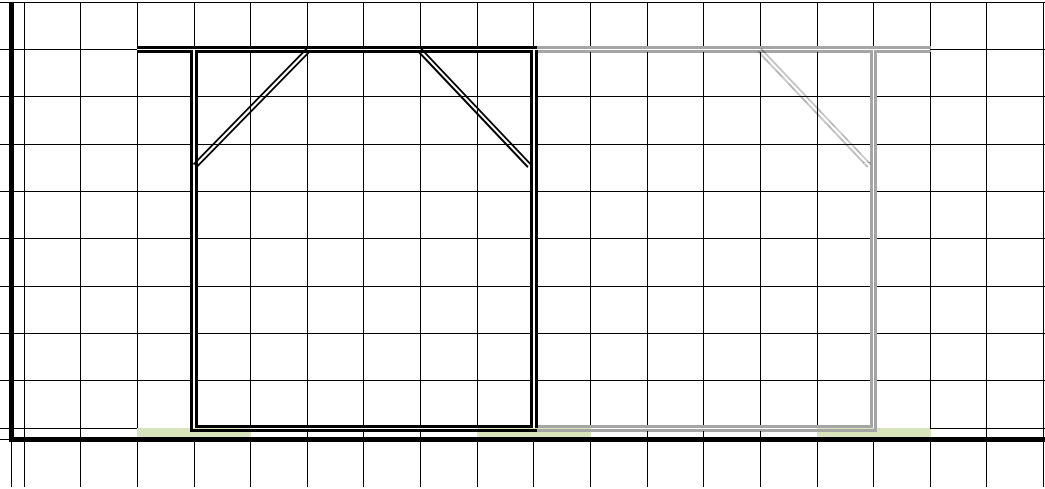
## East Side View



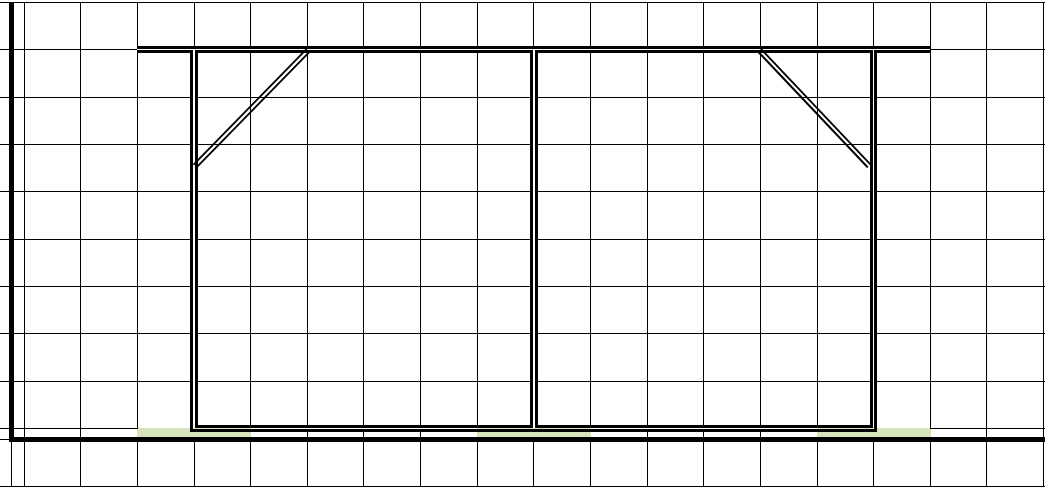
### West Side View



**North Side View**



**South Side View**





## Trellis Cost Calculator

Qty	Unit	Part#	Source	Description	Price	Ext
22	each	328913DPT	Home Depot	10 ft length of 1-3/8" fence top rail for top frame	\$10.47	\$230.34
15	each	328913DPT	Home Depot	10 ft length of 1-3/8" fence top rail for bottom frame	\$10.47	\$157.05
14	each	328913DPT	Home Depot	10 ft length of 1-3/8" fence top rail for verticals	\$10.47	\$146.58
7	each	328913DPT	Home Depot	10 ft length of 1-3/8" fence top rail for angular bracing	\$10.47	\$73.29
<b>42</b>	<b>each</b>	<b>9542</b>	<b>Johnny's Selected Seeds</b>	<b>Cross Connector for 1.315" x 1.315" Pipe, pkg of 2*</b>	<b>\$2.74</b>	<b>\$115.08</b>
28	each	ERC1313	<a href="http://chainlinkfittings.com/">http://chainlinkfittings.com/</a>	End rail T-clamp for 1-3/8" top rail	\$0.68	\$19.04
28	each	CB5162	<a href="http://chainlinkfittings.com/">http://chainlinkfittings.com/</a>	5/16" x 2" Carriage Bolt & Nut for T-clamp	\$0.22	\$6.16
40	each	BB13	<a href="http://chainlinkfittings.com/">http://chainlinkfittings.com/</a>	1-3/8" chain link brace band for angular braces	\$0.30	\$12.00
40	each	2750	<a href="http://www.boltdepot.com">www.boltdepot.com</a>	1/4"-20 x 1" carriage bolt for tension band	\$0.07	\$2.80
40	each	2648	<a href="http://www.boltdepot.com">www.boltdepot.com</a>	1/4" nuts for carriage bolts.	\$0.05	\$2.00
2	each	2396	<a href="http://www.boltdepot.com">www.boltdepot.com</a>	#6 x 1/2" self-tapping screws, box of 100	\$2.94	\$5.88
<b>Total Cost</b>						<b>\$770</b>

58 total pieces of top rail needed - get 60, just in case.

\*(our cost)